

Visual Selection Guide

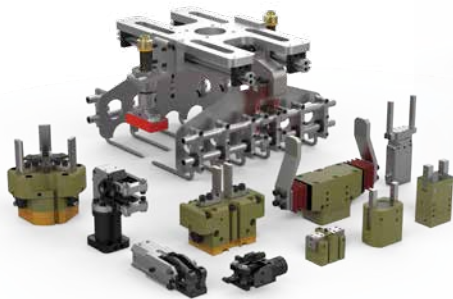
Robotic Tooling

Tool Changers and Compliance

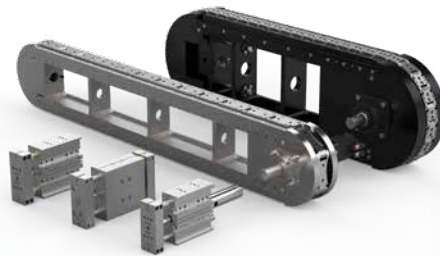


ABOUT DESTACO

Built on a Strong Foundation



Gripping Solutions



Linear Positioning Solutions



Rotary Positioning Solutions



Clamping Solutions



CRL Remote Handling Solutions



Robotic Tooling Solutions

Destaco, a Dover company, is a global leader in the design and manufacture of high-performance automation, workholding and remote-handling solutions. The company serves customers in a variety of end-markets, including the automotive, life sciences, consumer packaged goods, aerospace, industrial and nuclear sectors.

Built on a legacy of more than 100 years, Destaco offers a comprehensive portfolio of products designed to engineer precise movement, placement and control solutions that drive productivity and uptime for manufacturers around the world. The Destaco family of products consists of industry-leading brands such as Destaco Manual Clamps, Power Clamps, and End Effectors; CAMCO™ and Ferguson™ Indexers; Robohand™ Grippers; and CRL™ Manipulators and Transfer Ports.

Destaco is based in Auburn Hills, Michigan, U.S.A. The company has more than 800 employees with 13 locations, in 9 countries, across the Americas, Europe and Asia.

Destaco is part of Dover Corporation, a diversified global manufacturer with annual revenues of \$7 billion. The company delivers innovative equipment and components, specialty systems and support services through four major operating segments: Energy, Engineered Systems, Fluids, and Refrigeration & Food Equipment. Headquartered in Downers Grove, IL, (NYSE: DOV)

More information is available at destaco.com and dovercorporation.com



ROBOTIC TOOLING SOLUTIONS

Features and Benefits

Robotic Applications:

Perfect for those flexible/multiple tooling applications utilizing one Robot. This product was designed with exceptional repeatability, high rigidity & load capacity to make it ideal for any robotic application.

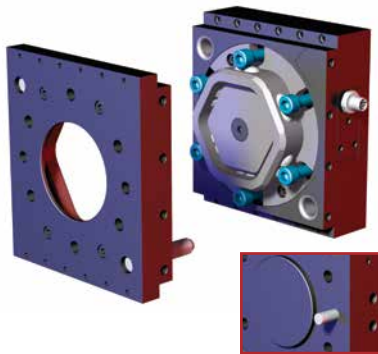
Automation Applications:

End effector tooling and interchangeable fixturing can be changed quickly and easily to accommodate many different styles of parts on the same assembly machine or machining center.

Automatic Tool Changers

Highly Configurable, Modular Design (RQC/RTP):

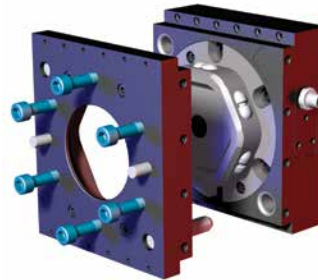
The Modular RQC series easily accommodates up to (4) optional modular interfaces, offering a high level of flexibility.



RQC Robot Half Adaptor

Counterbored holes for mounting with a dowel pin hole, a raised boss for location, and features a ISO9409-1 mounting pattern.

Back Side of RQC



Mounting Information

RTP Tool Half Adaptor

Tapped holes, two dowel pin holes for accurate location of payload, and features a ISO9409-1 mounting pattern.



QC Robot Half Adaptor

has counterbored holes for mounting and two dowel pins for hole location (size 30 has pilot boss).



TP Tool Half Adaptor

has counterbored holes for mounting and two dowel pins for hole location (size 30 has pilot boss).



RHC Robot Half Adaptor

mounts with screws from behind or through the front and locates with dowel pins for accuracy.



RHC Tool Half Adaptor

mounts payload with screws from behind or through the front and locates with dowel pins for accuracy. Protect cone surfaces from debris to insure proper positioning.

Compliance Devices

Flexibility of the Tool:

Cylindrical Horizontal compliance devices are used for inserting components that may be misaligned with the tool. They allow a horizontal displacement that compensates for part placing inaccuracies.

For Precision Applications:

High quality components allows for centering repeatability from 0.02mm and angular repeatability from $\pm 10^\circ$.

Harsh Environments:

Enclosed design allows them to be used in harsh environments.

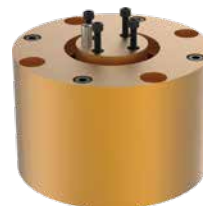
Spring Assist:

Optional spring assist allows for use in single acting mode.



CH Horizontal Compliance

The compliance is located using a pilot boss and a dowel pin and assembled using 4 or 6 through body screws.



Tool Mounting

Tooling is located using a centering and a dowel pin and assembled using 4 screws.

ROBOTIC TOOLING SOLUTIONS

Sizing and Application Chart

Automatic Tool Changers



Series	Page-#	Max Moment Kg [lb]								Max Payload Kg [lb]				Weight Kg [lb]				Features						
		0 to 50 [0 to 110]	50 to 100 [110 to 220]	100 to 500 [220 to 1100]	500 to 1000 [1100 to 2200]	1000 to 2000 [2200 to 4400]	2000 to 3000 [4400 to 6600]	3000 to 4000 [6600 to 8800]	4000+ [9120+]	0 to 50 [0 to 110]	50 to 100 [110 to 220]	100 to 500 [220 to 1100]	500 to 1000 [1100 to 2200]	1000+ [2280+]	0 to 2 [0 to 4.4]	2 to 4 [4.4 to 8.8]	4 to 6 [8.8 to 13.2]	6 to 8 [13.2 to 17.6]	8+ [17.6+]	Optional Modules	Multiple Module Interfaces	Round Design	Rectangular Design	Failsafe Locking
RQC/RTP-200	8				●															✓	✓		✓	✓
RQC/RTP-400	10					●														✓	✓		✓	✓
RQC/RTP-800	10						●													✓	✓		✓	✓
RQC/RTP-1200	10							●												✓	✓		✓	✓
RQC/RTP-2400	12								●											✓	✓		✓	✓
QC/TP-30	16	●								●					●						✓		✓	✓
QC/TP-60	16		●							●					●					✓		✓	✓	✓
QC/TP-60-10	16		●							●					●						✓		✓	✓
QC/TP-150	16			●							●					●				✓		✓	✓	✓
RHC-1	20	●													●						✓		✓	✓
RHC-2	20			●											●							✓		✓
RHC-3	20				●										●							✓		✓
RHC-4	20					●									●							✓		✓

Compliance Devices



Series	Page-TC-#	Max Centering Force Kg [lb]								Max Payload Kg [lb]				Weight Kg [lb]				Misalignment ±mm [±in]				Features			
		0 to 500 [0 to 1100]	500 to 1000 [1100 to 2200]	1000 to 2000 [2200 to 4400]	2000 to 3000 [4400 to 6600]	3000 to 4000 [6600 to 8800]	4000+ [9120+]	0 to 5 [0 to 110]	5 to 10 [110 to 220]	10 to 20 [220 to 1100]	20 to 40 [1100 to 2200]	0 to 1 [0 to 4.4]	1 to 2 [4.4 to 8.8]	2 to 4 [8.8 to 13.2]	4+ [17.6+]	3 [0.12]	5 [0.20]	6.5 [0.25]	8 [0.31]	12 [0.47]	Custom Misalignment	Optional Spring Assist	Harsh Environments	Field Repairable	
CH-50	21	●									●											✓	✓	✓	✓
CH-80	21		●								●											✓	✓	✓	✓
CH-110	21			●								●										✓	✓	✓	✓
CH-140	21				●							●										✓	✓	✓	✓
CH-165	21					●						●										✓	✓	✓	✓

ROBOTIC TOOLING SOLUTIONS

Tool Changer Sizing Guide

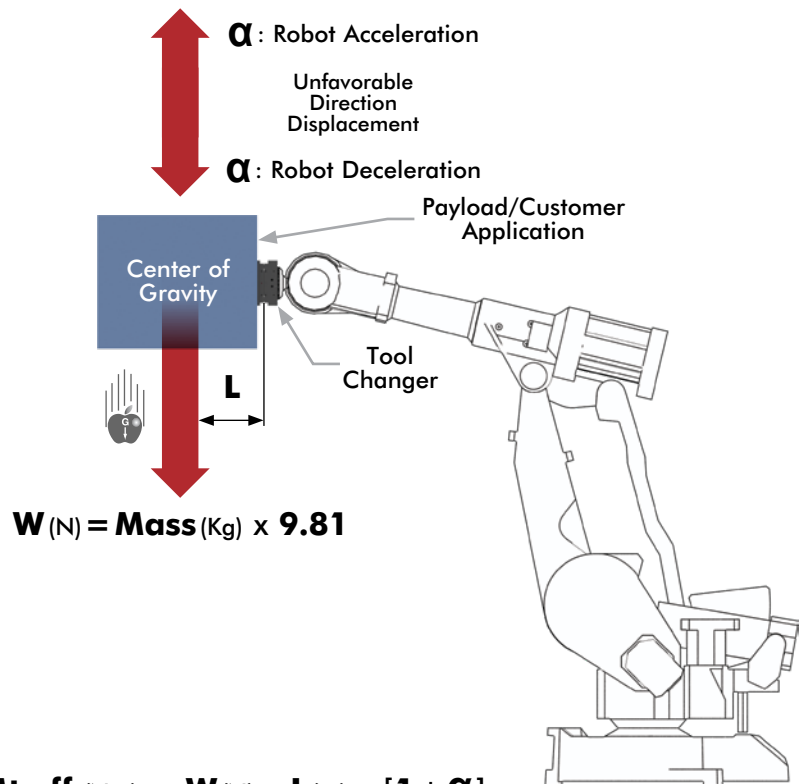
Tool Changer Sizing

For tool changer sizing, the maximum effective moment during displacement will be considered. The effective moment will be calculate in the worst case of the application, and must consider:

- The weight of the tool
- The position of the center of gravity
- The dynamic effect due to the maximum acceleration or deceleration. (Emergency stop for example)

See below the simplified calculation formula to estimate the effective moment of your application.

Required Information		
M	Mass of the tool attached on the tool changer	Kg
L	Distance from the payload center of gravity to the tool changer	m
α	Maximum acceleration or deceleration of the robot	g



Effective Moment →

$$M_{t \text{ eff}} \text{ (Nm)} = W \text{ (N)} \times L \text{ (m)} \times [1 + \alpha]$$

CAUTION: Applications with high and wide loads: in case of heavy application, we strongly recommend to strengthen the cylindrical and diamond indexing pins, between tool changer and tool plate, by adding larger diameter pins, the farthest to the center of changer tool, incorporated into the design of the tooling.

Application Example

Application Data	
Mass of tool	90 kg
Center of gravity / Tool Changer	0.5 m
Acceleration (or deceleration) of displacement	2 g

$$M_{t \text{ eff}} = (90 \times 9.81) \times 0.5 \times (1 + 2)$$

$$M_{t \text{ eff}} = 883 \times 0.5 \times 3$$

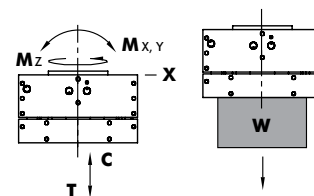
$$M_{t \text{ eff}} = 1324.5 \text{ Nm}$$

Loading Capacity:

Max. Tensile **T**: 2670 N [600 lb]

Max. Compressive **C**: 3560 N [800 lb]

Max. Moment (**M_x/M_y/M_z**) 1580 Nm [14000 in-lb]



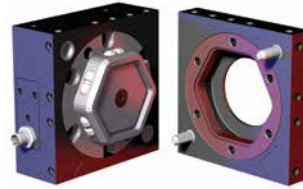
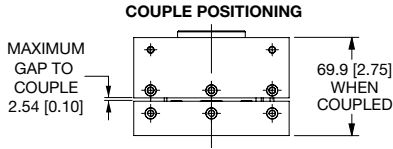
The obtained value 1324.5 Nm should be compared to the technical data of our products in this catalog in the "loading capacity information" section. For this application, the choice will be a RQC-400M tool changer that has a qualifying capacity, in terms of torque, of 1580Nm, over than the 1325Nm of the application.

AUTOMATIC TOOL CHANGERS

Technical Information

RQC-200/RTP-200

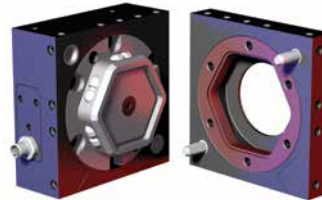
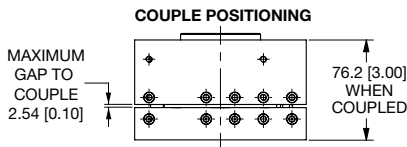
Combined Weight: 3 Kg [6.7 lb]
 Max. Payload: 90 Kg [200 lb]
 Max. Moment: 810 Nm [7200 in-lb]



RQC-200 Robot Adaptor Module
RTP-200 Tool Adaptor Module

RQC-400/RTP-400

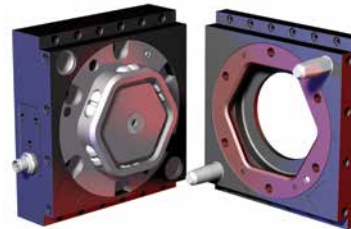
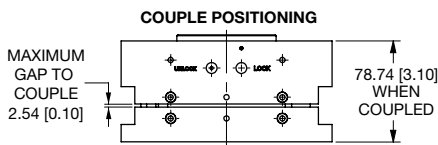
Combined Weight: 4.7 Kg [10.4 lb]
 Max. Payload: 180 Kg [400 lb]
 Max. Moment: 1580 Nm [14000 in-lb]



RQC-400 Robot Adaptor Module
RTP-400 Tool Adaptor Module

RQC-800/RTP-800

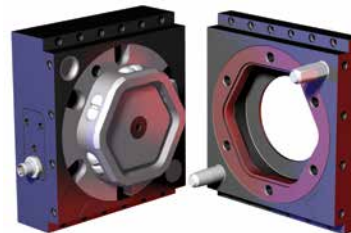
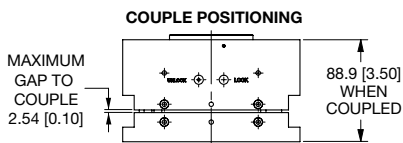
Combined Weight: 7.1 Kg [15.8 lb]
 Max. Payload: 360 Kg [800 lb]
 Max. Moment: 2490 Nm [22000 in-lb]



RQC-800 Robot Adaptor Module
RTP-800 Tool Adaptor Module

RQC-1200/RTP-1200

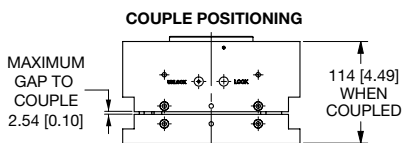
Combined Weight: 8.3 Kg [18.4 lb]
 Max. Payload: 550 Kg [1200 lb]
 Max. Moment: 3390 Nm [30000 in-lb]



RQC-1200 Robot Adaptor Module
RTP-1200 Tool Adaptor Module

RQC-2400/RTP-2400

Combined Weight: 30 Kg [66.1 lb]
 Max. Payload: 1089 Kg [2400 lb]
 Max. Moment: 7000 Nm [61955 in-lb]



RQC-2400 Robot Adaptor Module
RTP-2400 Tool Adaptor Module

AUTOMATIC TOOL CHANGERS

Technical Information

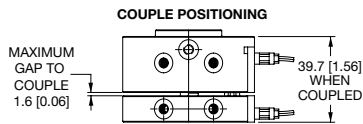
QC-30/TP-30

**Robot
Adaptor
Module**



**Tool
Adaptor
Module**

Combined Weight: 0.34 Kg [0.75 lbs]
Max. Payload: 13.6 Kg [30 lbs]
Max. Moment: 22.6 Nm [200 in-lbs]



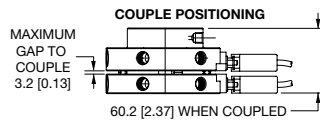
QC-60/TP-60

**Robot
Adaptor
Module**



**Tool
Adaptor
Module**

Combined Weight: 1.27 Kg [2.8 lbs]
Max. Payload: 27 Kg [60 lbs]
Max. Moment: 88.1 Nm [780 in-lbs]



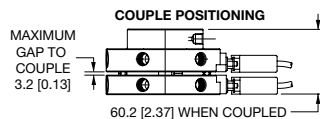
QC-60-10P/TP-60-10P

**Robot
Adaptor
Module**



**Tool
Adaptor
Module**

Combined Weight: 1.27 Kg [2.8 lbs]
Max. Payload: 27 Kg [60 lbs]
Max. Moment: 88.1 Nm [780 in-lbs]



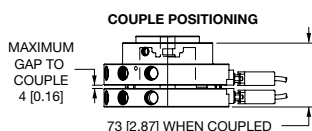
QC-150/TP-150

**Robot
Adaptor
Module**



**Tool
Adaptor
Module**

Combined Weight: 3.2 Kg [7.1 lbs]
Max. Payload: 68 Kg [150 lbs]
Max. Moment: 215 Nm [1900 in-lbs]



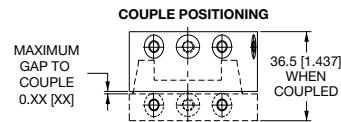
RHC-1-R/ RHC-1-T

**Robot
Adaptor
Module**



**Tool
Adaptor
Module**

Combined Weight: 0.29 Kg [0.63 lbs]
Max. Payload: 9 Kg [20 lbs]
Max. Moment: 28 Nm [250 in-lbs]



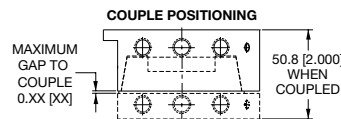
RHC-2-R/ RHC-2-T

**Robot
Adaptor
Module**



**Tool
Adaptor
Module**

Combined Weight: 0.82 Kg [1.81 lbs]
Max. Payload: 59 Kg [130 lbs]
Max. Moment: 136 Nm [1200 in-lbs]



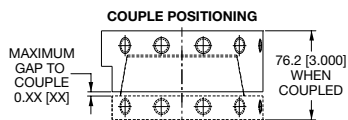
RHC-3-R/ RHC-3-T

**Robot
Adaptor
Module**



**Tool
Adaptor
Module**

Combined Weight: 3.1 Kg [6.8 lbs]
Max. Payload: 136 Kg [300 lbs]
Max. Moment: 1017 Nm [9000 in-lbs]



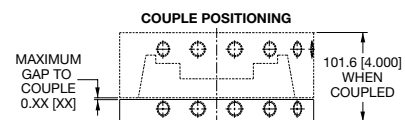
RHC-4-R/ RHC-4-T

**Robot
Adaptor
Module**



**Tool
Adaptor
Module**

Combined Weight: 11 Kg [24.3 lbs]
Max. Payload: 454 Kg [1000 lbs]
Max. Moment: 2825 Nm [25000 in-lbs]



AUTOMATIC TOOL CHANGERS

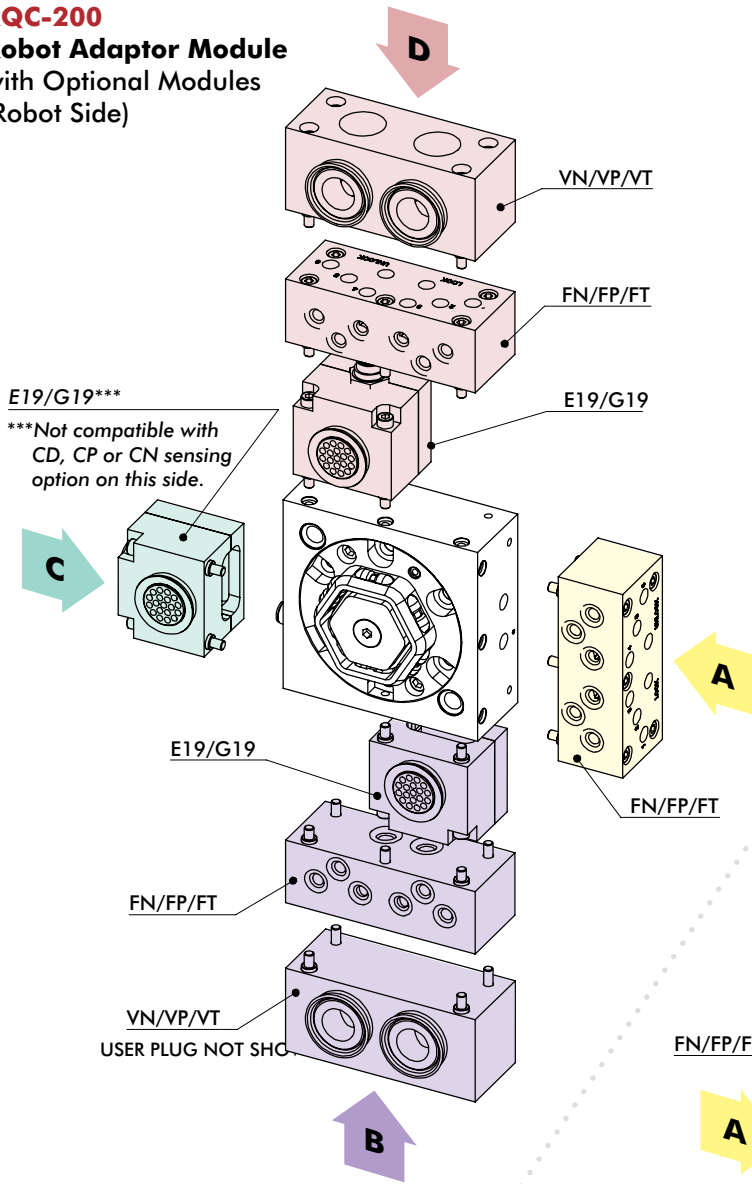
RQC/RTP Series Tool Changers

CLICK OR SCAN

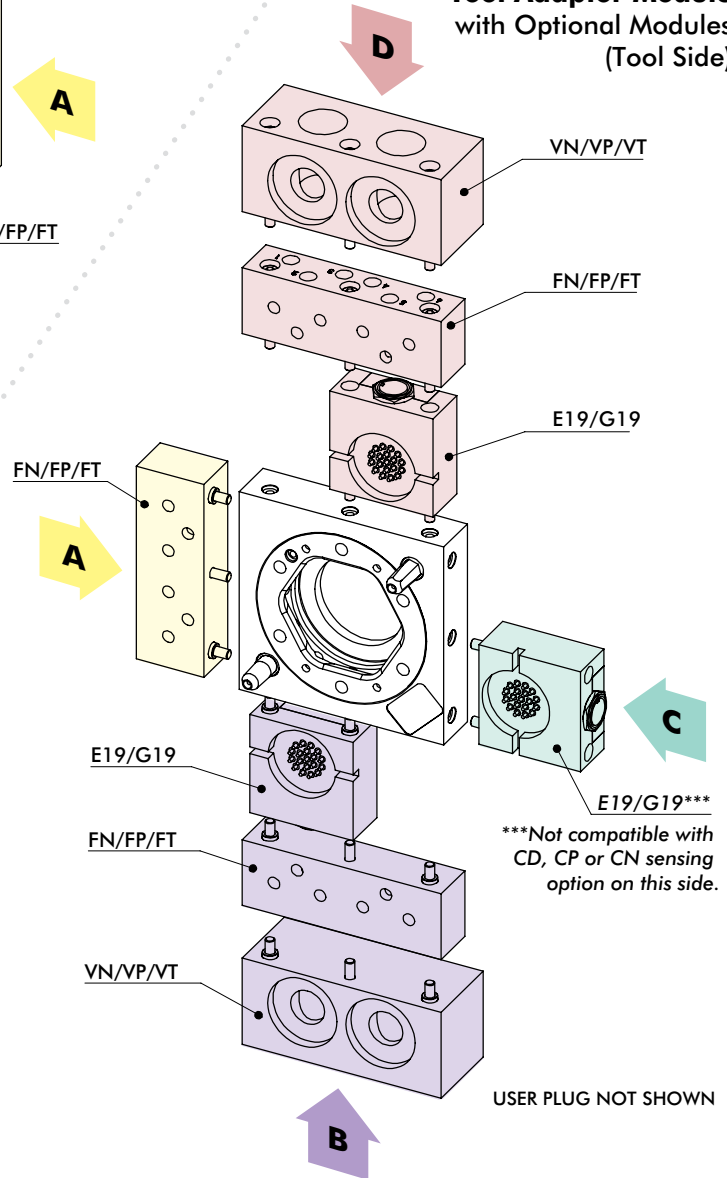
To view full
catalog pages
on this product



RQC-200 Robot Adaptor Module with Optional Modules (Robot Side)



RTP-200 Tool Adaptor Module with Optional Modules (Tool Side)



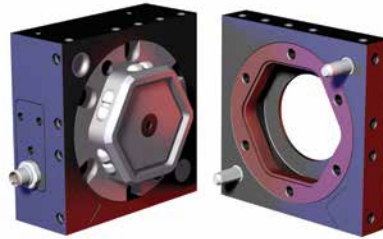


CLICK OR SCAN

To view full catalog pages on this product

AUTOMATIC TOOL CHANGERS

RQC/RTP Series Tool Changers



Robot Side
RQC-200

Tool Side
RTP-200

Base Model	Model Size	Port Options (RQC-only)	Sensing (RQC-only)	Side A MODULES	Side B MODULES	Side C MODULES	Side D MODULES
RQC Robot Side	200 (See Page 6 for Specifications)	N 1/8 NPT	L0 No Sensing	0	0	0	0
RTP Tool Side		M 1/8 BSPP	LP* PNP Inductive Sensing				
		A 1/8 BSPT	CP† PNP Inductive Sensing with M12 connector				
			LN* NPN Inductive Sensing				
			CN† NPN Inductive Sensing with M12 connector				
			LD* Dry contact sensor				
			CD† Dry contact sensor with M12 connector				

*Requires **E19** or **G19** module mounted on **Side C**.
†Cordset or plug are sold separately.

Optional Electrical, Air and Vacuum Modules can be ordered with Base Model

See below for Module Description

(See Page 8 for Illustrated Module Use Configuration)

Side A	Side B	Side C	Side D	Order Code	Optional Modules
●	●	●	●	0	No Module
	●	●***	●	E19***	19 pin, 3 Amp, 48 VDC Module w/Turck M16 Conn, w/o Cordset
	●	●***	●	G19***	19 pin, 5 Amp, 120 VDC Module w/Industrial User Conn., w/o Cable
●	●		●	FN	6X 1/8" NPT Air Ports Module, Face Seal, 10 Bar
●	●		●	FP	6X 1/8" BSPP Air Ports Module, Face Seal, 10 Bar
●	●		●	FT	6X 1/8" BSPT Air Ports Module, Face Seal, 10 Bar
	●		●	VN	2X 3/4" Vacuum + 4 X 1/4" Air NPT Ports Module, Face Sealing
	●		●	VP	2X 3/4" Vacuum + 4 X 1/4" Air BSPP Ports Module, Face Sealing
	●		●	VT	2X 3/4" Vacuum + 4 X 1/4" Air BSPT Ports Module, Face Sealing

†Cordset or plug are sold separately. ***Not compatible with **CD**, **CP** or **CN** sensing option.

NOTE: Only (1) module can be mounted per side. Modules usage is based on the size of the Base Model and which side the module can be mounted.

AUTOMATIC TOOL CHANGERS

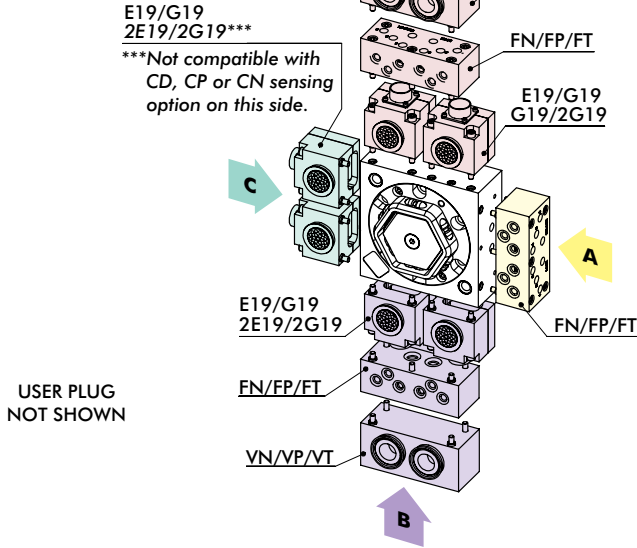
RQC/RTP Series Tool Changers

CLICK OR SCAN

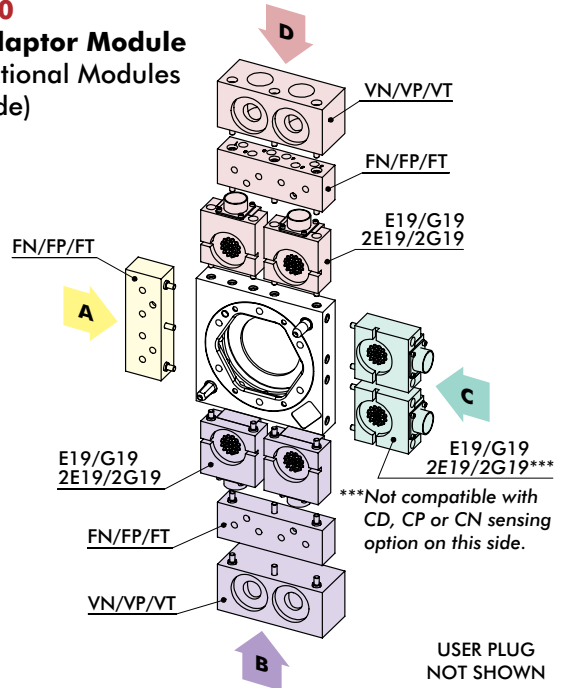
To view full catalog pages on this product



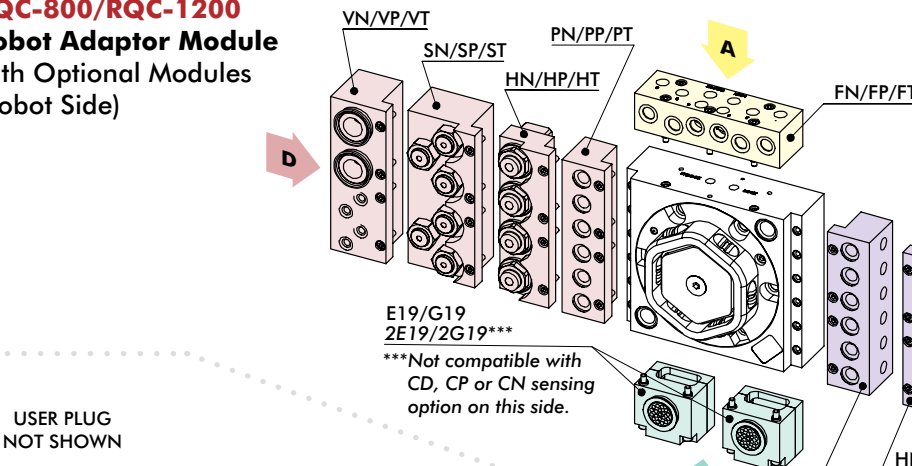
RQC-400 Robot Adaptor Module with Optional Modules (Robot Side)



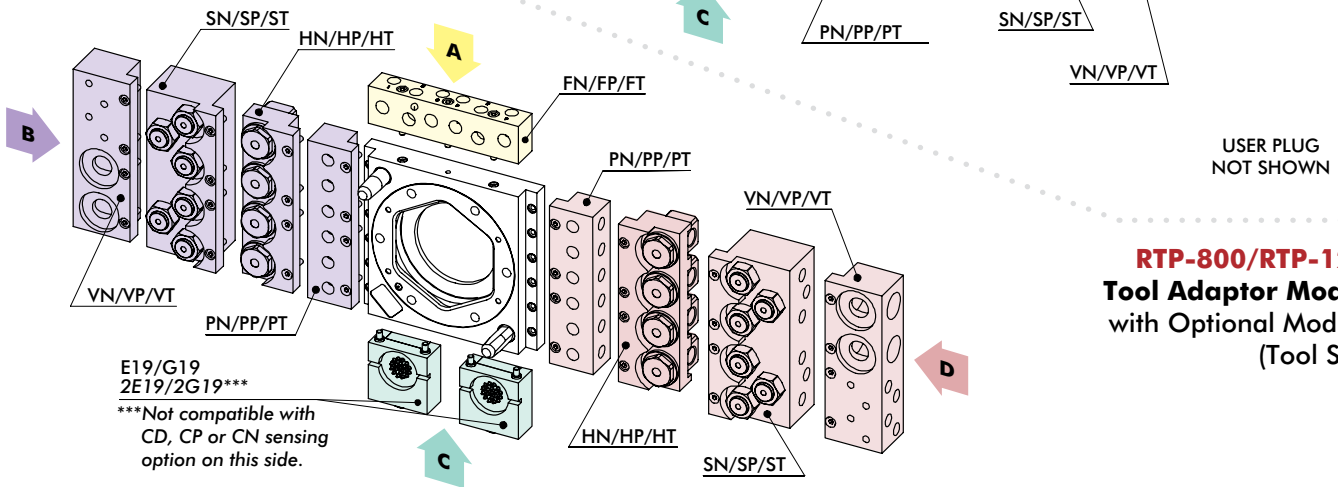
RTP-400 Tool Adaptor Module with Optional Modules (Tool Side)



RQC-800/RQC-1200 Robot Adaptor Module with Optional Modules (Robot Side)



NOTE: Only (1) module can be mounted per side (except 2E19, 2G19 which are composed of (2) modules)



RTP-800/RTP-1200 Tool Adaptor Module with Optional Modules (Tool Side)



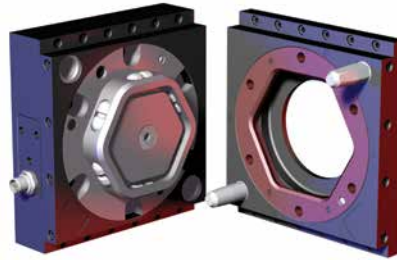
CLICK OR SCAN
To view full
catalog pages
on this product

AUTOMATIC TOOL CHANGERS

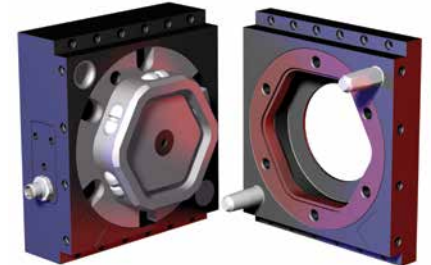
RQC/RTP Series Tool Changers



Robot Side
RQC-400 Tool Side
RTP-400



Robot Side
RQC-800 Tool Side
RTP-800



Robot Side
RQC-1200 Tool Side
RTP-1200

Base Model	Model Size	Port Options (RQC-only)	Sensing (RQC-only)	Side A MODULES	Side B MODULES	Side C MODULES	Side D MODULES
RQC	400	N	LO	0	0	0	0
RQC Robot Side	400 800	N 1/8 NPT	LO No Sensing	<div style="border: 1px solid black; padding: 5px;"> Optional Electrical, Air, Vacuum and Fluid Modules can be ordered with Base Model See below for Module Description (See Page 10 for Illustrated Module Use Configuration) </div>			
RTP Tool Side	1200 (See Page 6 for Specifications)	M 1/8 BSPP	LP* PNP Inductive Sensing				
		A 1/8 BSPT	CP† PNP Inductive Sensing with M12 connector				
			LN* NPN Inductive Sensing				
			CN† NPN Inductive Sensing with M12 connector				
			LD* Dry contact sensor				
			CD† Dry contact sensor with M12 connector				

*Requires **E19** or **G19** module mounted on **Side C**.
†Cordset or plug are sold separately.

400	800/1200	Side A	Side B	Side C	Side D	Order Code	Optional Modules
•	•	•	•	•	•	0	No Module
	•			•		E19†	19 pin, 3 Amp, 48 VDC Module w/Turck M16 Conn, w/o Cordset
	•			•***		2E19***	2X 19 pin, 3 Amp, 48 VDC Module w/Turck M16 Conn, w/o Cordset
	•			•		G19	19 pin, 5 Amp, 120 VDC Module w/Industrial User Conn., w/o Cable
	•			•***		2G19***	2X 19 pin, 5 Amp, 120 VDC Module w/Industrial User Conn., w/o Cable
•			•	•	•	E19†	19 pin, 3 Amp, 48 VDC Module w/Turck M16 Conn, w/o Cordset
•			•	•***	•	2E19***	2X 19 pin, 3 Amp, 48 VDC Module w/Turck M16 Conn, w/o Cordset
•			•	•	•	G19	19 pin, 5 Amp, 120 VDC Module w/Industrial User Conn., w/o Cable
•			•	•***	•	2G19***	2X 19 pin, 5 Amp, 120 VDC Module w/Industrial User Conn., w/o Cable
•		•	•		•	FN	6X 1/8" NPT Air Ports Module, Face Seal, 10 Bar
•		•	•		•	FP	6X 1/8" BSPP Air Ports Module, Face Seal, 10 Bar
•		•	•		•	FT	6X 1/8" BSPT Air Ports Module, Face Seal, 10 Bar
	•	•			•	FN	6X 1/4" NPT Air Ports Module, Face Seal, 10 Bar
	•	•			•	FP	6X 1/4" BSPP Air Ports Module, Face Seal, 10 Bar
	•	•			•	FT	6X 1/4" BSPT Air Ports Module, Face Seal, 10 Bar
	•		•		•	PN	6X 1/4" NPT Air Ports Module, Face Seal, 10 Bar
	•		•		•	PP	6X 1/4" BSPP Air Ports Module, Face Seal, 10 Bar
	•		•		•	PT	6X 1/4" BSPT Air Ports Module, Face Seal, 10 Bar
	•		•		•	SN	6X 1/4" NPT Air Ports Module, Self Sealing, 10 Bar
	•		•		•	SP	6X 1/4" BSPP Air Ports Module, Self Sealing, 10 Bar
	•		•		•	ST	6X 1/4" BSPT Air Ports Module, Self Sealing, 10 Bar
•			•		•	VN	2X 3/4" Vacuum + 4 X 1/4" Air NPT Ports Module, Face Sealing
•			•		•	VP	2X 3/4" Vacuum + 4 X 1/4" Air BSPP Ports Module, Face Sealing
•			•		•	VT	2X 3/4" Vacuum + 4 X 1/4" Air BSPT Ports Module, Face Sealing
	•		•		•	HN	4X 3/8" NPT Fluid Ports Module, 100 Bar
	•		•		•	HP	4X 3/8" BSPP Fluid Ports Module, 100 Bar
	•		•		•	HT	4X 3/8" BSPT Fluid Ports Module, 100 Bar

†Cordset or plug are sold separately. ***Not compatible with **CD**, **CP** or **CN** sensing option.

NOTE: Only (1) module can be mounted per side. (Except **2E19** and **2G19**, which are composed of (2) modules).
Modules usage is based on the size of the Base Model and which side the module can be mounted.

AUTOMATIC TOOL CHANGERS

RQC/RTP Series Tool Changers

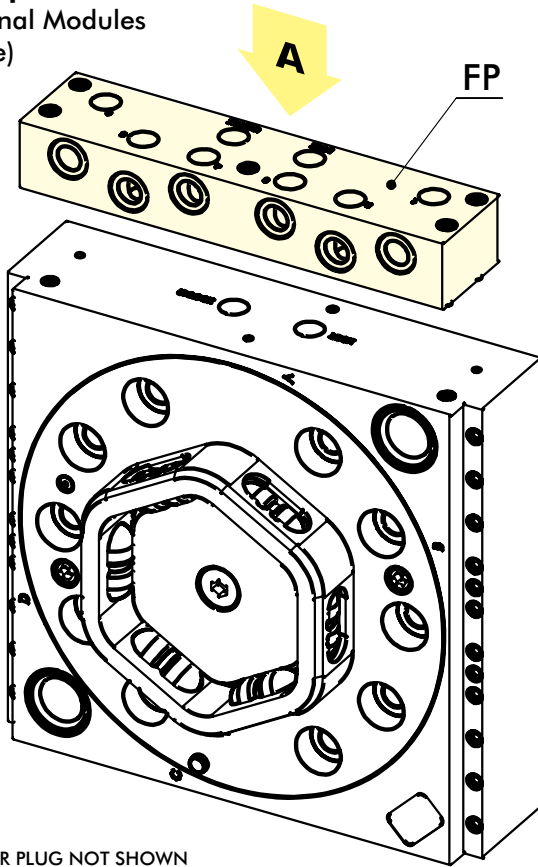
CLICK OR SCAN

To view full
catalog pages
on this product



RQC-2400

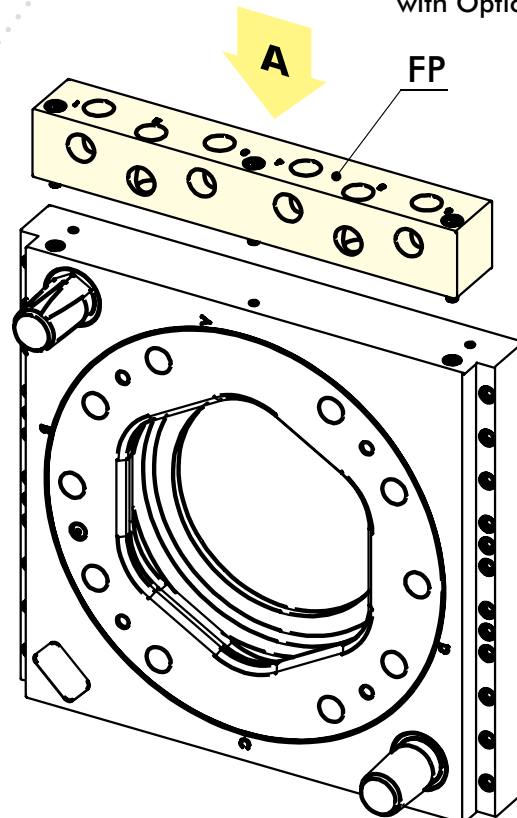
Robot Adaptor Module
with Optional Modules
(Robot Side)



USER PLUG NOT SHOWN

RTP-2400

Tool Adaptor Module
with Optional Modules
(Tool Side)



USER PLUG NOT SHOWN

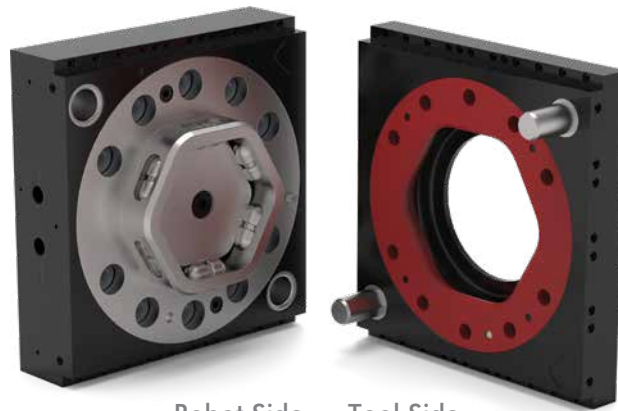


CLICK OR SCAN

To view full catalog pages on this product

AUTOMATIC TOOL CHANGERS

RQC/RTP Series Tool Changers



Robot Side
RQC-2400

Tool Side
RTP-2400

Base Model	Model Size	Port Options (RQC-only)	Sensing (RQC-only)	Side A MODULES
RQC Robot Side	2400 (See Page 6 for Specifications)	N 1/8 NPT	L0 No Sensing	0
RTP Tool Side		M 1/8 BSPP	LP PNP Inductive Sensing	
		A 1/8 BSPT	CP† PNP Inductive Sensing with M12 connector	
			LN NPN Inductive Sensing	
			CN† NPN Inductive Sensing with M12 connector	
			LD Dry contact sensor	
			CD† Dry contact sensor with M12 connector	

†Cordset or plug are sold separately.

Optional Air Modules can be ordered with Base Model
See below for Module Description
(See Page 12 for Illustrated Module Use Configuration)

Side A	Order Code	Optional Modules
•	0	No Module
•	FP	6X 1/8" BSPP Air Ports Module, Face Seal, 10 Bar

AUTOMATIC TOOL CHANGERS

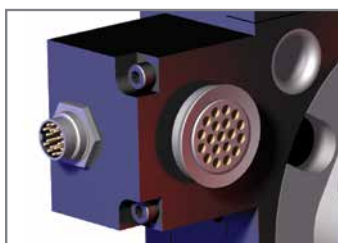
RQC/RTP Series Tool Changers

CLICK OR SCAN

To view full
catalog pages
on this product

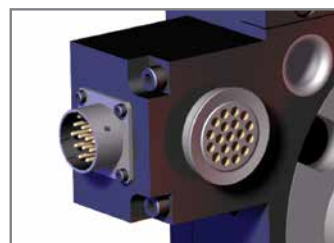


Optional Electrical Modules



19 Pin Module 3 Amp - 48 VDC

MODULE REPLACEMENT	ROBOT SIDE	TOOL SIDE
E19	KE19-RQC	KE19-RTP

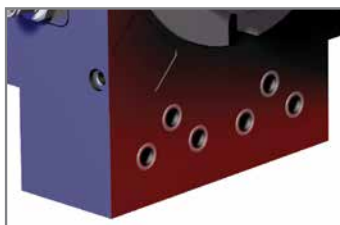


19 Pin Module 5 Amp - 120 VDC

MODULE REPLACEMENT	ROBOT SIDE	TOOL SIDE
E19	KG19-RQC	KG19-RTP

Module kits above include: 90° Plug Support (without cable), indexing sleeves and hardware.

Air Ports Modules with Face Seals



Robot Side

MODULE REPLACEMENT	FOR RQC-200/400	FOR RQC 800/1200
FN	KFN-RQC200	KFN-RQC800
FP	KFP-RQC200	KFP-RQC800
FT	KFT-RQC200	KFT-RQC800

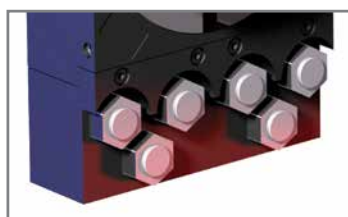
Tool Side

MODULE REPLACEMENT	FOR RTP-200/400	FOR RTP 800/1200
FN	KFN-RTP200	KFN-RTP800
FP	KFP-RTP200	KFP-RTP800
FT	KFT-RTP200	KFT-RTP800

MODULE REPLACEMENT	FOR RQC-2400
FN	KFN-RQC2400

MODULE REPLACEMENT	FOR RTP-2400
FN	KFN-RTP2400

Air Ports Modules with Face Seals (for RQC/RTP-800 & RQC/RTP-1200)



Double Shut-Off

MODULE REPLACEMENT	ROBOT SIDE	TOOL SIDE
SN	KSN-RQC800	KSN-RTP800
SP	KSP-RQC800	KSP-RTP800
ST	KST-RQC800	KST-RTP800



CLICK OR SCAN

To view full catalog pages on this product

AUTOMATIC TOOL CHANGERS

RQC/RTP Series Tool Changers

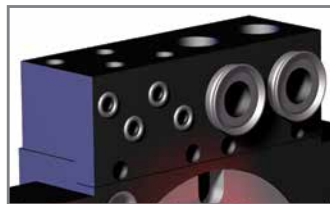
Air Ports Module Face Seal (for RQC/RTP-800 & RQC/RTP-1200)



MODULE REPLACEMENT	ROBOT SIDE	TOOL SIDE
PN	KPN-RQC800	KPN-RTP800
PP	KPP-RQC800	KPP-RTP800
PT	KPT-RQC800	KPT-RTP800

Module kits above include: Couplings, indexing sleeves and hardware.

Vacuum Ports Modules with Face Seal



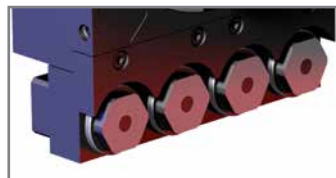
Robot Side

Tool Side

MODULE REPLACEMENT	FOR RQC-200/400	FOR RQC 800/1200
VN	KVN-RQC200	KVN-RQC800
VP	KVP-RQC200	KVP-RQC800
VT	KVT-RQC200	KVT-RQC800

MODULE REPLACEMENT	FOR RQC-200/400	FOR RTP 800/1200
VN	KVN-RTP200	KVN-RTP800
VP	KVP-RTP200	KVP-RTP800
VT	KVT-RTP200	KVT-RTP800

Fluid Ports Modules, Non-Spilling, Double Shut-Off (for RQC/RTP-800 & RQC/RTP-1200)



MODULE REPLACEMENT	ROBOT SIDE	TOOL SIDE
HN	KHN-RQC800	KHN-RTP800
HP	KHP-RQC800	KHP-RTP800
HT	KHT-RQC800	KHT-RTP800

Module kits above include: Couplings, indexing sleeves and hardware.

Electric and Pneumatic Accessories (Ordered Separately)

Electrical and pneumatic accessories are ordered separately.

Please note some electrical accessories can only be used with certain modules for either **RQC** or **RTP** "Base Models".

For pneumatic accessories, size of "Base Model" is considered.

ELECTRICAL ACCESSORIES

- ELCT-048** 90° Female Plug, w/o Cable, Solder Type, Cable Clamp for G19 (**RQC** Only)
- ELCT-049** 90° male Plug, w/o Cable, Solder Type, Cable Clamp for G19 (**RTP** Only)
- CABL-028** 90° Female M12 Cordset with 2M Cable for CP, CN, and CD (**RQC** Only)
- CABL-029** 90° Female Cordset with 4M Cable for E19 (**RQC** Only)
- CABL-031** 90° male Cordset with 2M Cable for E19 (**RTP** Only)
- OSRK-004** PNP Inductive Sensor Repair Kit (**RQC** Only)
- OSRK-005** NPN Inductive Sensor Repair Kit (**RQC** Only)
- OSRK-006** Dry Contact Sensor Repair Kit (**RQC** Only)

PNEUMATIC ACCESSORIES

- SLKT-402** RQC-400 Standard Seal Repair Kit
- SLKT-403** RQC-800 Standard Seal Repair Kit
- SLKT-404** RQC-1200 Standard Seal Repair Kit
- SLKT-XXX** RQC-2400 Standard Seal Repair Kit

AUTOMATIC TOOL CHANGERS

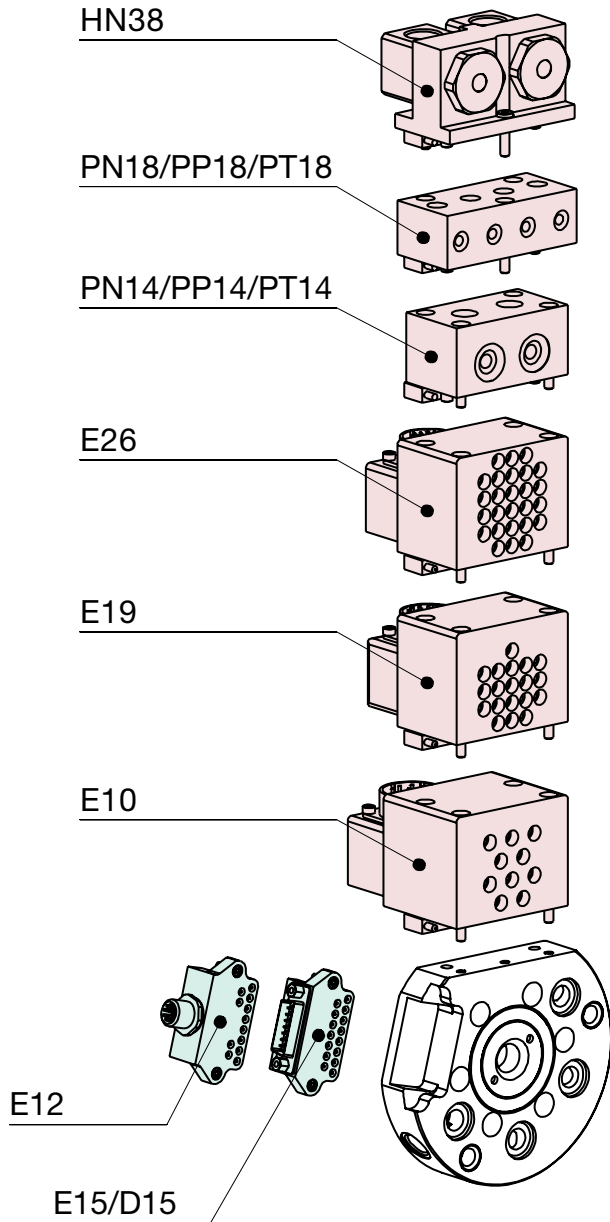
QC/TP Series Tool Changers

CLICK OR SCAN

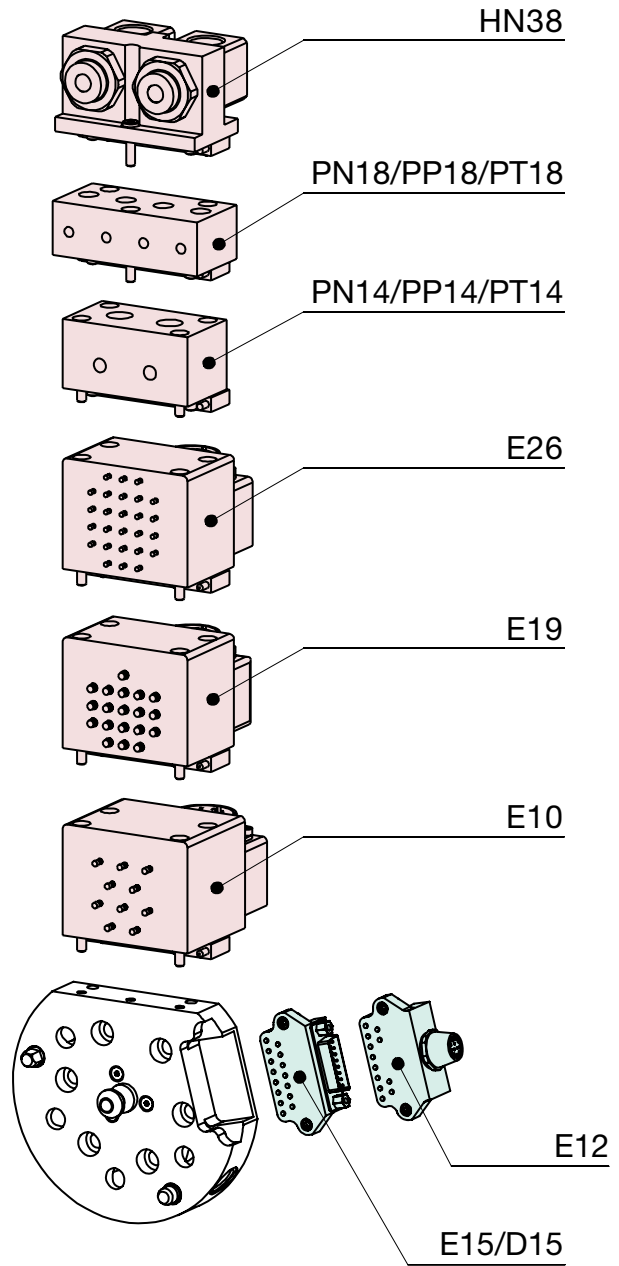
To view full
catalog pages
on this product



QC Series Robot Adaptor Module with Optional Modules (Robot Side)



TP Series Tool Adaptor Module with Optional Modules (Tool Side)





CLICK OR SCAN

To view full catalog pages on this product

AUTOMATIC TOOL CHANGERS

QC/TP Series Tool Changers



Base Model	Model Size	Port Options (QC-only)	I/O Block	Optional Modules*	10-Port (QC/TP-60 only)
QC	60	M	E15	PN18	10P
QC	30	Blank	0		
Robot Side	60	NPT	No I/O Block		
TP	150	M	E15		
Tool Side	(See Page 7 for Specifications)	BSPP	15-pin, Sub-D		
		A	D15		
		BSPT	(2) X E15		
		(QC-60 and QC-150 only)	(QC/TP-30 only)		
			E12		
			12-pin, Turck		

Order Code	Optional Modules
E26	26-PIN 5A Module
E19*	19-PIN 5A Module
E10	10-PIN 13A Module
PN18	4X 1/8 NPT Pneumatic Port
PP18	4X 1/8 BSPP Pneumatic Port
PT18	4X 1/8 BSPT Pneumatic Port
PN14	2X 1/4 NPT Pneumatic Port
PP14	2X 1/4 BSPP Pneumatic Port
PT14	2X 1/4 BSPT Pneumatic Port
HN38	2X 3/8 NPT Fluid Port

***QC/TP-30 and QC/TP-60-10P cannot be ordered with optional modules**

Electric and Pneumatic Accessories (Ordered Separately)

Electrical Accessories

- ELCT-047** Straight Female 12-pin D-Sub User Plug, w/o Cable, Solder Type for E15 (QC/TP-60/150)
- CABL-021** 90° Female Cordset 4M for E12 (QC-30/60/150)
- CABL-023** 90° Male Cordset 2M for E12 (TP-30/60/150)
- CABL-024** Straight Male Cordset 1.2M for E15 (QC/TP-30)
- OSRK-009** NPN Inductive Sensor Repair Kit (QC-150 Only)
- OSRK-010** PNP Inductive Sensor Repair Kit (QC-150 Only)

Pneumatic Accessories

- SLKT-387** Seal Repair Kit (QC-30)
- SLKT-388** Face Seal Repair Kit (QC-30)
- SLKT-389** Seal Repair Kit (QC-60)
- SLKT-390** Face Seal Repair Kit (QC-60/150)
- SLKT-392** Face Seal Repair Kit (QC-60-10P)
- SLKT-393** Seal Repair Kit (QC-150)

Electrical and pneumatic accessories are ordered separately.

Please note some electrical accessories can only be used with certain modules for either **QC** or **TP** "Base Models".

For pneumatic accessories, size of "Base Model" is considered.

AUTOMATIC TOOL CHANGERS

CLICK OR SCAN

To view full catalog pages on this product



QC/TP Series Tool Changers

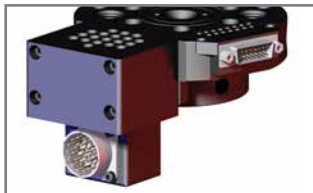
Optional Electrical Modules



10-Pin Module 5Amp @ 120VDC Electric Module

Model	Module	Robot Side	Tool Side	*Accessory
QC/TP60	E10	KE10-QC60	KE10-TP60	ELCT-041 (Female)
QC/TP150	E10	KE10-QC150	KE10-TP150	ELCT-042 (Male)

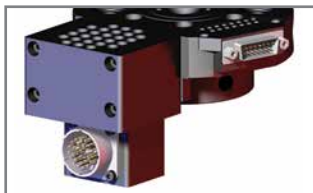
*Straight Plug, (w/o Cable), Solder Type, Cable Clamp



19-Pin Module 5Amp @ 120VDC Electric Module

Model	Module	Robot Side	Tool Side	*Accessory
QC/TP60	E19	KE19-QC60	KE19-TP60	ELCT-043 (Female)
QC/TP150	E19	KE19-QC150	KE19-TP150	ELCT-044 (Male)

*Straight Plug, (w/o Cable), Solder Type, Cable Clamp



26-Pin Module 5Amp @ 120VDC Electric Module

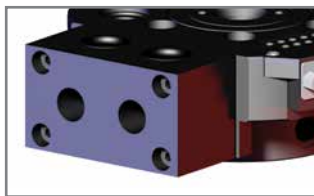
Model	Module	Robot Side	Tool Side	*Accessory
QC/TP60	E26	KE26-QC60	KE26-TP60	ELCT-045 (Female)
QC/TP150	E26	KE26-QC150	KE26-TP150	ELCT-046 (Male)

*Straight Plug, (w/o Cable), Solder Type, Cable Clamp

Module kits above include: Flat for module mounting, straight plug (without cable), locating pins and hardware.

Air Ports Modules with Face Seals

2 X 1/8"



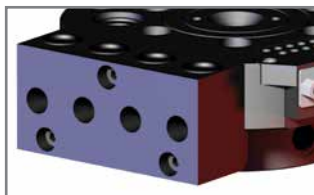
For QC/TP-60

Module	Robot Side	Tool Side
PN14	KPN14-QC60	KPN14-TP60
PP14	KPP14-QC60	KPP14-TP60
PT14	KPT14-QC60	KPT14-TP60
Seal Kit	SLKT-395	---

For QC/TP-150

Module	Robot Side	Tool Side
PN14	KPN14-QC150	KPN14-TP150
PP14	KPP14-QC150	KPP14-TP150
PT14	KPT14-QC150	KPT14-TP150
Seal Kit	SLKT-395	---

4 X 1/8"



For QC/TP-60

Module	Robot Side	Tool Side
PN18	KPN18-QC60	KPN18-TP60
PP18	KPP18-QC60	KPP18-TP60
PT18	KPT18-QC60	KPT18-TP60
Seal Kit	SLKT-391	---

For QC/TP-150

Module	Robot Side	Tool Side
PN18	KPN18-QC150	KPN18-TP150
PP18	KPP18-QC150	KPP18-TP150
PT18	KPT18-QC150	KPT18-TP150
Seal Kit	SLKT-391	---

Module kits above include: Flat for module mounting, seals, locating pins and hardware.



CLICK OR SCAN

To view full catalog pages on this product

AUTOMATIC TOOL CHANGERS

QC/TP Series Tool Changers

Fluid Ports Modules, Non-Spilling, Double Shut-Off



For QC/TP-60

Module	Robot Side	Tool Side
HN38	KHN38-QC60	KHN38-TP60

For QC/TP-150

Module	Robot Side	Tool Side
HN38	KHN38-QC150	KHN38-TP150

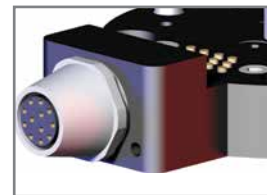
Module kits above include: Flat for module mounting, seals, locating pins and hardware.

Sub-D Conn and User Plug IO Block



15 Pin

Model	Module	Robot Side	Tool Side
QC/TP30	E15	KE15-QC30	KE15-TP30
QC/TP60	E15	KE15-QC60	KE15-TP60
QC/TP150	E15	KE15-QC150	KE15-TP60



12 Pin

Model	Module	Robot Side	Tool Side
QC/TP30	E12	KE12-QC30	KE12-TP30
QC/TP60	E12	KE12-QC60	KE12-TP60
QC/TP150	E12	KE12-QC150	KE12-TP60

Module kits above include: Flat for module mounting couplings, locating pins and hardware.

AUTOMATIC TOOL CHANGERS

RHC Series Tool Changers

CLICK OR SCAN

To view full catalog pages on this product



Robot Side
RHC-1-R



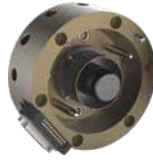
Tool Side
RHC-1-T



Robot Side
RHC-2-R



Tool Side
RHC-2-T



Robot Side
RHC-3-R



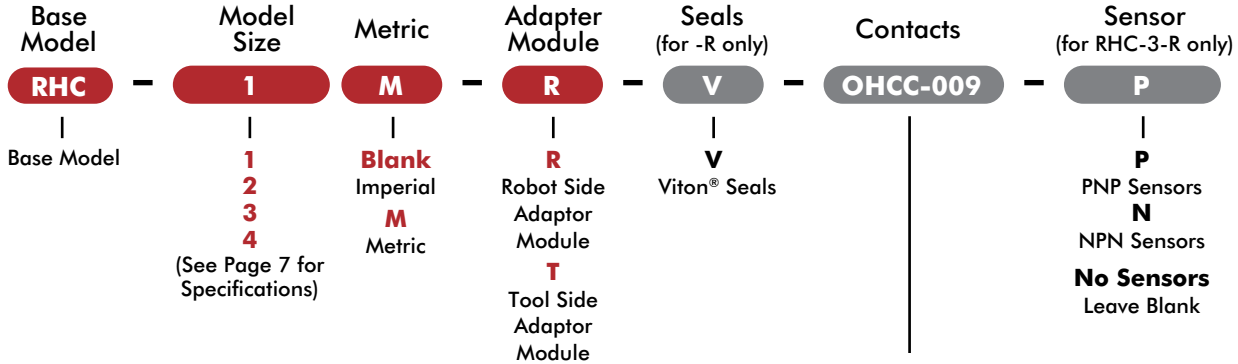
Tool Side
RHC-3-T



Robot Side
RHC-4-R



Tool Side
RHC-4-T



Robot Side	Optional Contacts
OHCC-009	15 Pin D-Sub Contacts (RHC-1)
OHCC-001	26 Pin D-Sub Contacts (RHC-1)
OHCC-011	15 Pin D-Sub Contacts (RHC-2, -3)
OHCC-003	25 Pin D-Sub Contacts (RHC-2, -3)
OHCC-005	19 Pin Mil. Spec. Contacts (RHC-3)
OHCC-007	38 Pin Mil. Spec. Contacts (RHC-3)
OHCC-021	24 Pin Mil. Spec. Contacts (RHC-4)
Tool Side	Optional Contacts
OHCC-010	15 Pin D-Sub Contacts (RHC-1)
OHCC-002	26 Pin D-Sub Contacts (RHC-1)
OHCC-012	15 Pin D-Sub Contacts (RHC-2, -3)
OHCC-004	25 Pin D-Sub Contacts (RHC-2, -3)
OHCC-006	19 Pin Mil. Spec. Contacts (RHC-3)
OHCC-027	24 Pin Mil. Spec. Contacts (RHC-4)
OHCC-023	24 Wire Single Pigtail Connector (RHC-4)
OHCC-022	24 Wire Double Pigtail Connector (RHC-4)

Sensor and Pneumatic Accessories (Ordered Separately)

Sensor Accessories

- OSMK-064** Replacement Sensor Mounting Kit (**RHC-3-R**)
- OISP-009** Replacement Locked Position NPN Inductive Sensor with Hard Wired Cable (**RHC-3-R**)
- OISP-009** Replacement Locked Position NPN Inductive Sensor with Hard Wired Cable (**RHC-3-R**)
- OSMK-063** Replacement Sensor Mounting Kit (**RHC-4-R**)
- OISN-008** Replacement Locked Position NPN Inductive Sensor with Hard Wired Cable (**RHC-4-R**)
- OISP-008** Replacement Locked Position PNP Inductive Sensor with Hard Wired Cable (**RHC-4-R**)

Pneumatic Accessories

- SLKT-028** Standard Seal Repair Kit (**RHC-1-R**)
- SLKT-028V** Viton Seal Repair Kit (**RHC-1-R**)
- SLKT-029** Standard Seal Repair Kit (**RHC-2-R**)
- SLKT-029V** Viton Seal Repair Kit (**RHC-2-R**)
- SLKT-030** Standard Seal Repair Kit (**RHC-3-R**)
- SLKT-030V** Viton Seal Repair Kit (**RHC-3-R**)
- SLKT-031** Standard Seal Repair Kit (**RHC-4-R**)
- SLKT-031V** Viton Seal Repair Kit (**RHC-4-R**)

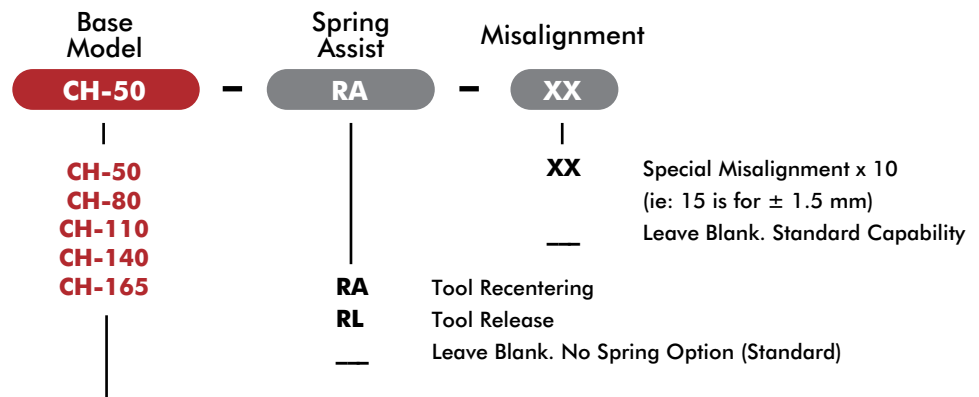
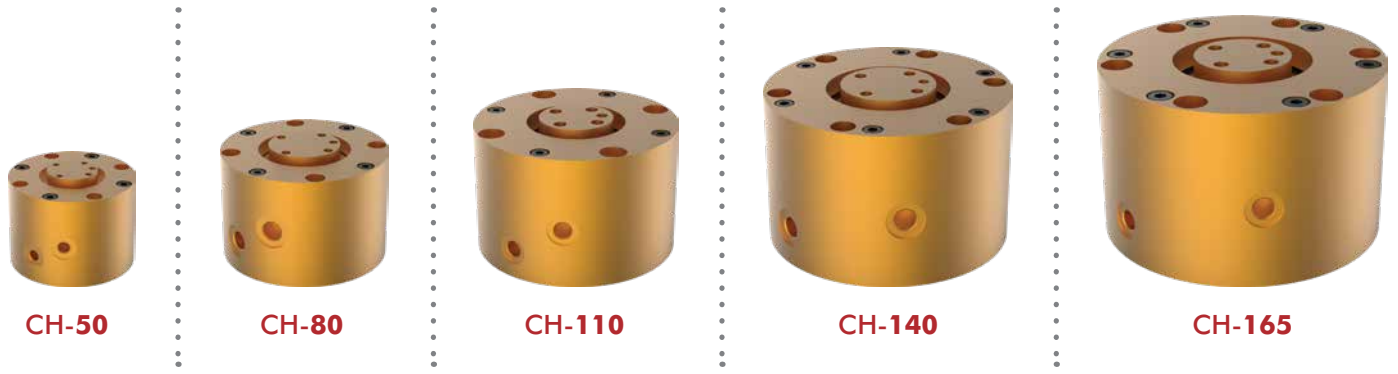


CLICK OR SCAN

To view full catalog pages on this product

COMPLIANCE DEVICE

CH Series Cylindrical Horizontal Compliance Device



Size	Centering Force Nm [in-lb]	Max. Payload Kg [lbs]
CH-50	322 [74]	2 [4.4]
CH-80	1035 [232]	8 [17.6]
CH-110	1660 [373]	14 [30.8]
CH-140	3170 [712]	30 [66.1]
CH-165	4140 [931]	40 [88.2]

OUR PORTFOLIO OF PRODUCTS



End Effectors (EE)

- Tool Changers
- End-of-Arm Tooling
- Vacuum Products
- Palletizing Solutions



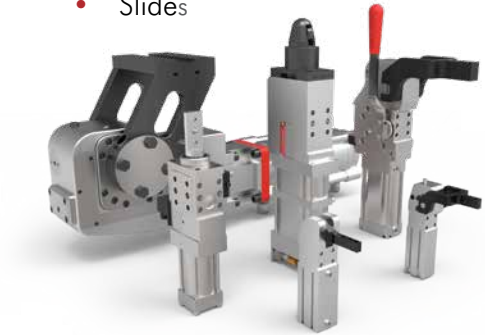
Grippers (GR)

- Electric Grippers
- Pneumatic and Sheet Metal Grippers
- Rotates
- Slides



Indexers (IN)

- Precision Conveyors
- Dial Indexers
- Shaft and Flange Indexers
- Part Handlers



Power Clamps (PC)

- Power Clamps
- Pin Clamps and Packages
- Pivot Units
- Power Cylinders



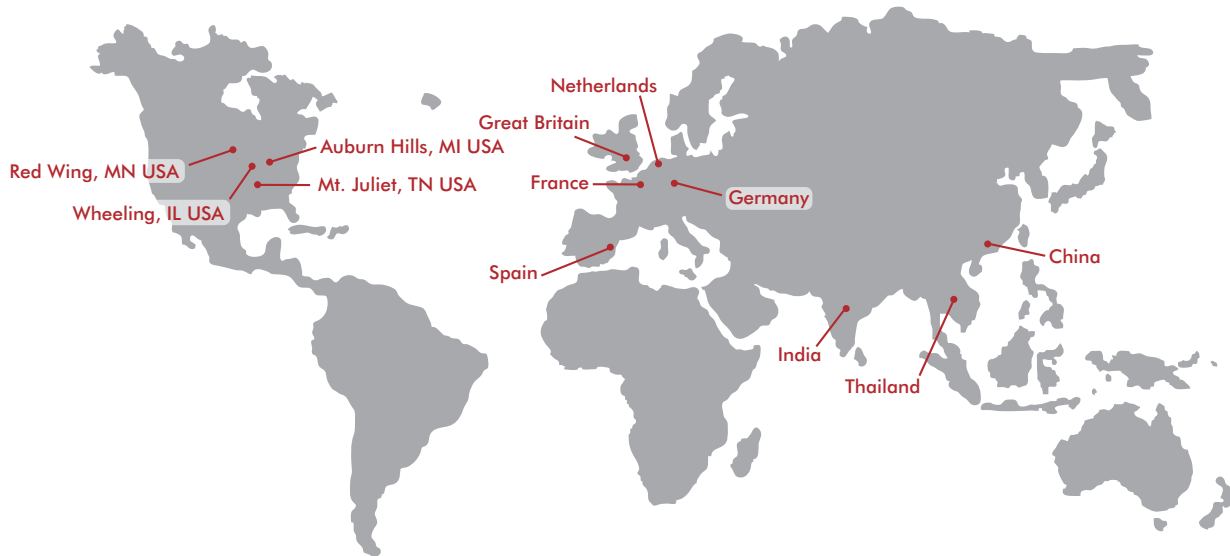
Manual Clamps (MC)

- Hold Down
- Squeeze Action
- Plunger, Hook and Latch
- Pneumatic Toggle and Swing



Sheet Metal Grippers (SG)

- Accelerate® Press Room
- Cam Type
- Toggle Lock



GLOBAL LOCATIONS

NORTH AMERICA

Corporate Headquarters

Auburn Hills, Michigan
Toll Free: 1.888.DESTACO
Marketing: marketing@destaco.com

Global Technology Center

Auburn Hills, Michigan
Tel: 1.248.836.6700
Customer Service: customerservice@destaco.com

Mt. Juliet, Tennessee
Tel: 1.888.DESTACO
Customer Service: customerservice@destaco.com

Wheeling, Illinois
Tel: 1.800.645.5207
Customer Service: camco@destaco.com

Red Wing, Minnesota (Central Research Laboratories)
Tel: 651.385.2142
Customer Service: sales@centres.com

ASIA

Thailand
Tel: +66-2-326-0812
Customer Service: info@destaco.com

China
Tel: +86-21-6081-2888
Customer Service: china@destaco.com

India
Tel: +91-80-41123421-426
Customer Service: india@destaco.com

EUROPE

Germany
Tel: +49-6171-705-0
Customer Service: europe@destaco.com

France
Tel: +33-4-73545001
Customer Service: france@destaco.com

Great Britain
Tel: +44-1902-797980
Customer Service: uk@destaco.com

Spain
Tel: +34-936361680
Customer Service: spain@destaco.com

Netherlands
Tel: +31-297285332
Customer Service: benelux@destaco.com